



## 2004 Treasurer's Annual Report

### INCOME

Dues	\$945.00
Publication Sales	\$315.00
Cemetery Walk	\$845.00
Suzanne Long Memorial	\$200.00
Interest	\$ 22.03
Annual Dinner	\$280.00
<b>TOTAL</b>	<b>\$2608.03</b>

### DISBURSEMENTS

Cemetery Walk	\$171.49
Equipment Purchase	\$325.05
Fees	\$ 20.00
Annual Dinner	\$218.22
Printing	\$599.50
Postage	\$607.50
Refreshments	\$ 25.00
<b>TOTAL</b>	<b>\$1966.76</b>

**Checking Account Balance April 30, 2004** \$3,834.75

**Savings Account Balance April 30, 2004** \$12,748.78

**TOTAL BALANCE** \$16,583.53

*For Fiscal Year Ending 2003-2004*



## New President Is Elected

During the close of business before our annual dinner, those on hand approved the selection and elected several new board members and a new president.

Curtis Freeman will step down as president and continue to serve as a board member. Curt has been president of the society since 1999 and held that post for the longest of any past presidents on record.

Ken Stromberger will now become the new president of the Hammond Historical Society.

Rounding off the list of officers are Margaret Evans, First Vice President—Second Vice President, Richard Lytle—Secretary, Marjorie Sohl, and Treasurer, Larry Knoerzer.

### Reminder

This will be the last issue of the FLASHBACK newsletter you will receive until we resume publication once again in the fall.

Look for the next issue of your FLASHBACK newsletter to be delivered in September before our next meeting. Until then please have a SAFE SUMMER!

## Thanks Goes Out To First Assembly of God Church

We would like to send out a special round of thanks to Pastor J. Calaway and Executive Pastor Scott Wells along with their wives and all of those who help to make this years annual dinner another successful event. Thanks also goes out to all of those members who were in attendance as well. After a delightful dinner Pastor J Calaway enlightened us on the church and its history.

*Editor in Chief — Roy J. Speelman  
Layout Editor — William J. Uzdanovich*

*FLASHBACK is published monthly from September thru May—Eight times a year*

— FLASHBACK is a publication of the Hammond Historical Society  
564 State Street Hammond, IN 46320-1532  
All Content Copyright © 2004

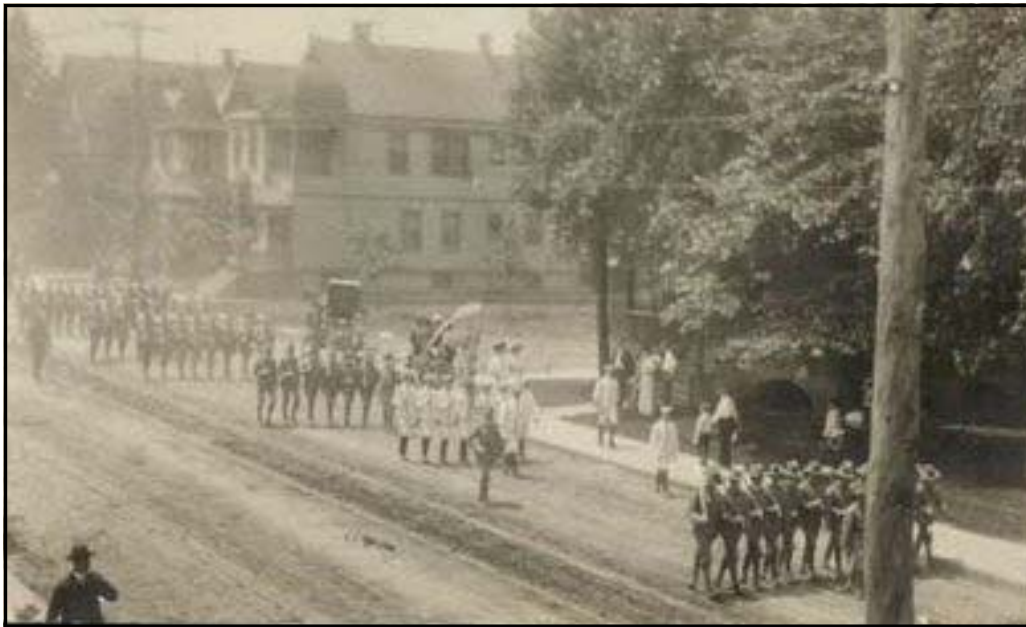
### INSIDE THIS ISSUE

### VOLUME MMIV — 5

EVERYONE LOVES A PARADE — HAMMOND CELEBRATES 2

MEMBERSHIP 2004 3

VINTAGE VIEW — HOHMAN AND PLUMMER CIRCA 1930'S COVER



*Marching bands on parade during Hammond's Fourth of July celebration in 1907.*

Parades have probably been around just as long as Hammond has been a city. Because the way we see it is as long as you have a crowd of spectators and group of participants with a reason to celebrate you've got a parade.

Civic pride and the cause for celebration are generally the main reasons to have a parade. Parades that focus on the major holidays are general themes for some of the more well known parades. Easter, Independence Day, Labor Day, Thanksgiving and Christmas are some that come to mind more quickly.

Celebrating the return home of a sporting team after winning a state championship or title is just cause for a citywide celebration down Main Street. Welcoming a well known political candidate to town during a campaign stop or a popular Hollywood celebrity will earn them the keys to the city not to mention a parade.

Although we don't know what the very first parade in the city was and when it took place, Hammond has had its share of parades and celebrations over the years.

Some of the more popular holiday themed parades that have been held in town are in no doubt the traditional Christmas parades and Fourth of July parades.

Sponsored by the downtown merchants and downtown chamber of commerce, the annual Christmas holiday parade was a staple during the heyday of Downtown Hammond. As the business district shifted the city's Christmas parade now takes place in the Woodmar section of town.

The city's summertime parades include the annual Fourth of July Parade held on the weekend of the July holiday. The Independence Day parade starts at Hohman and Russell and travels down the downtown's main thoroughfare to Harrison Park where it concludes with an evening of celebration throughout the park. Another new comer to the parade scene in Hammond is the annual Little Red Schoolhouse parade which also takes place in July. The parade runs along Kennedy Avenue in Hessville and highlights that area's heritage.

One of the most notable parades to take place along the theme of sports, was when the city celebrated the triumphant return of the Hammond Tech Tigers during their run for the 1940 State Basketball Championship. Upon the return of the team from down state, thousands of cheering fans welcomed the athletes back home when they were greeted at the Monon train station in downtown Hammond. It was a time of great civic pride for the city and Northwest Indiana as well.

# Everyone Loves A Parade Hammond Celebrates

President Calvin Coolidge and the First Lady were welcomed to the city with a parade when they were in town for a visit to dedicate the new Wicker Park in neighboring Highland on June 14, 1927.

During the 1960's era a number of major political candidates accompanied by Hollywood film star supporters, made campaign stops in the city and were welcomed here with a parade.

The annual Dog Walk parades our canine friends along Hohman Avenue from downtown to Harrison Park and concludes there with a round of themed events.

When the circus would come to town many years ago it would arrive in the city via the railroad. A parade would take place from the rail yard to the circus grounds. This was enjoyed by both young and old alike. Circus wagons filled with clowns and animals must have been quite an unusual site to see when compared to the floats and marching bands of the traditional parade.

Parades were sometimes a traffic stopper not only for the autos and pedestrians but the trains as well. It was extremely difficult many years ago not having to cross over a set of railroad tracks especially in downtown business district.

It must have been really nice back then to have the shoe on the other foot, imagine being in a parade and having a train wait for you to pass.

# 2004 Annual Dues Renewal Reminder Notice

Our new fiscal year begins on May 1st, 2004 — As our current fiscal year comes to a close, now is the time to make sure your annual dues are up to date.

Please check the date above the name on your address label. If the date does not read — **EXP 4/30/2005** your dues need to be renewed for the upcoming year. *Please note that we Do Not send out any bills for membership dues.*

▶▶ **EXP 04/30/2005** ◀◀  
**Mr Marcus M Towle**  
**5276 Sohl Avenue**  
**Hammond IN 46320- 5678**

The current dues schedule is as follows:

**\$10.00 Individual or Couple — \$25.00 Corporate or Business**

**ATTENTION:** If you have already renewed your dues for the upcoming year and it is not reflected on the current address label it will show up on the next issue in September. Thanks!

**2004 Dues**

Hammond Historical Society  
Please Enroll or Renew My Membership  
Amount Enclosed \$ \_\_\_\_\_

**NAME** \_\_\_\_\_  
**ADDRESS** \_\_\_\_\_  
**CITY** \_\_\_\_\_  
**STATE** \_\_\_\_\_ **ZIP+4** \_\_\_\_\_

Please send check or money order **DO NOT SEND CASH!**  
Make your payment payable to the **Hammond Historical Society**  
and mail to:

**Richard Lytle / Membership Dues**  
**Hammond Historical Society**  
**564 State Street**  
**Hammond, IN 46320-1532**



**THE HAMMOND HISTORICAL SOCIETY**  
564 STATE STREET HAMMOND, IN 46320-1532

Nonprofit Organization  
U. S. Postage  
**PAID**  
Hammond, Indiana  
Permit No. 1843

**ADDRESS SERVICE REQUESTED**

Here's a look back at an all too familiar scene in Hammond, as a Monon Railroad steam powered locomotive stops at the station to load and unload passengers and freight.

At the right hand side of the this photograph we can catch a glimpse of the Hohman Avenue Tower and the old Indiana Hotel building, just above it's roof.

Multiply the traffic tie ups like this, times the number of railroads that crossed through the city and you'll get a picture of how the world treated the average Hammond citizen.

Life was tough back then especially if one had to get somewhere on time, which didn't happen to often, unless you allowed yourself extra time.

The railroads would make and later break the Downtown Hammond shopping district.

## *Vintage View: Downtown Hammond 1930's Hohman Avenue & Plummer Street Crossing*

