



FLASHBACK

HAMMOND HISTORICAL SOCIETY

MAY 2003

Calumet Room Renamed To Honor Suzanne Long



In late April the Hammond Public Library Board of Directors voted to rename the Calumet Room in the Main Public Library to pay tribute to the late Suzanne Long.

After a month of consideration the Library Board went along with the wishes of many residents who wanted the Calumet Room renamed to honor Suzanne Long who was the Calumet Room's librarian for eight years up until her death in September of last year.

Upon Suzanne's death many donations were made in her name to the Calumet Room. Along with that many residents and library patrons wrote letters and called library board members to ask that the name of the Calumet Room be changed in her honor. Board Member Betty Balanoff stated "Suzanne was so closely identified with the Calumet Room, and I think we need to consider the wishes of the donors and residents."

Please Note No Monthly Meeting for May

Please see the news article located on this page for the Special Monthly Meetings for the upcoming Cemetery Tour Planning for October.

Cemetery Tour Planning Meetings To Continue During The Summer Months

Even though the Hammond Historical Society is officially off for the summer months, some members will be busy planning for the up coming Suzanne Long Memorial Cemetery Tour set to take place this fall. This years tour is scheduled for Oak Hill Cemetery on the first or second Sunday in October.

In order to make this event a success we will need the help of many volunteers. Your help is needed! If you or any of your family, friends or neighbors are interested in taking part please call Peg Evans at the Library at 931-5100 ext 305. We have tentatively scheduled the third Wednesday of our summer recess period as Cemetery Tour Planning Meetings. The meetings will take place in the Suzanne G. Long Local History Room formerly the Calumet Room of the Hammond Public Library Main at 564 State Street at 6:30 p.m. — May 21, June 18, July 16 & Aug 20 — dates subject to revision.

**Hammond Achievement
Award Dinner at
The Center Purdue Calumet
Tuesday, June 10—6:30 p.m.**

Sponsored by
The Hammond Rotary &
Hammond Historical Society
Honoree & Keynote Speaker
Carolyn Curiel former Ambassa-
dor to Belizee now on the New
York Times Editorial Board. Tick-
ets \$25 by reservation only please
call: 853-6378 or 554-0155

*Editor in Chief — Roy J. Speelman
Layout Editor — William J. Uzdanovich*

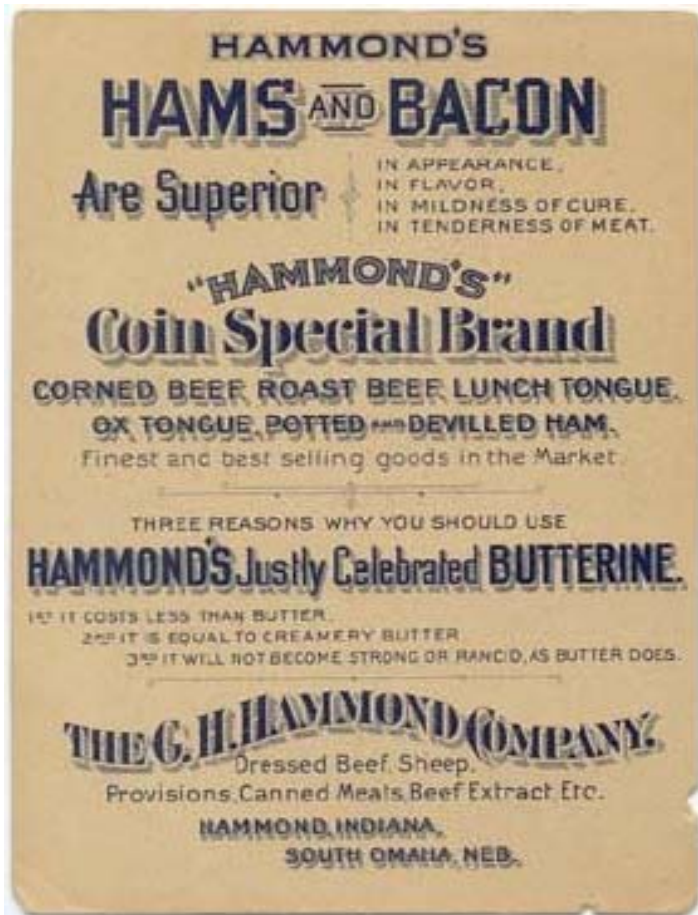
*FLASHBACK is published monthly from
September thru May—Eight times a year*

— FLASHBACK is a publication of the
Hammond Historical Society
All Content Copyright © 2003

INSIDE THIS ISSUE

VOLUME MMIII—5

HAMMOND'S FIRST INDUSTRY	2
ANNUAL MEMBERSHIP DUES RENEWAL REMINDER	3
VINTAGE VIEW — ROBERTSDALE	COVER



Hammond's First Industry

*This article is reprinted
from the archives of the Hammond Historical Society*

One bright day in the fall of 1868, four men crossed the Michigan Central bridge and going east from the Smith ice houses were seen trying to approach the water line of the Grand Calumet River. After having walked about a mile east, they held a conference on a slightly raised bit of land near the river bank. It was afterwards decided that Mr. Hammond thought they had found just the spot and would secure a piece of land there upon which to build the ice houses and slaughter houses. At that time the land close to the river was covered with a dense growth of wild rice and marsh grasses while the ridges back were covered with an almost impenetrable growth of scrub oak.

After winding their way along the meandering line of the Grand Calumet River for an hour they came to a place where solid earth formed a bank to the stream, while owing to the formation of a slough along the opposite bank of the river, the stream at this point seemed much wider which was a valuable consideration with a view of getting a crop of ice.

Marcus M. Towle selected this spot for the site of their plant and was backed by the Plummers. Mr. Hammond was at first not in favor of this location and urge the selection of the former site further west. He afterward endorsed this selection and it became the site upon which the plant was built and from which fresh beef was shipped in Davis refrigerator cars and boats to almost all parts of the world. The boundary lines were State Line on the west, Grand Calumet River on the north, Michigan Central railroad on the south and the west line of Hohman Street on the east.

Building material was sent by the carload from Chicago and was sent to State Line, Indiana and billing was to and from Gibson, then a station long standing on the Michigan Central though miles east was the nearest telegraph and post office. Today nothing remains of what was once Gibson, the place that was once the western termination of the Michigan Central Railroad. There was once a hotel, railroad station, pumping station and tank, several residences and the post office, all of which have long since been removed. In the early days of the Michigan Central stage coaches carried passengers going west from Gibson along the old Indian trail which crossed the river at Hohman Street bridge and followed the ridge where Hegewisch now is.

Before the building material arrived at State Line for building of the ice houses, slaughter house and boarding house. Ernest and Caroline Hohman purchased 40 acres of land at \$100 per acre. This land was located south of the river and north of the Michigan Central right-of-way and west of Hohman Street. The men engaged in putting up the buildings were crowded into the small houses of the few resident farmers.

The greatest number were accommodated by the Hohman family who lived in along houses in the north side of the river. About the middle of September, 1868, three car loads of lumber were stopped on the Michigan Central back where the Hohman Street crossing now exists, the train was held while the lumber was thrown off along the side tracks. This was the starting of what is now the city of Hammond.

Carpenters were brought in from Chicago and Detroit. All homes within miles were pressed into service as boarding houses and besides the large family, Mrs. Hohman made room for men engaged in building the slaughter house. Among these men were Marcus M. Towle, James Booth and Frank Miller. Henry Klemen lived about where the city hall is now, and where the Central Park is was formerly the orchard of the Klemen's. The city of Hammond purchased the ground from Klemen in 1884.

A wealth of historical and genealogical information can be obtained at the Suzanne G. Long Local History Room in the Main Hammond Public Library building at 564 State Street.

Annual Dues Renewal Reminder Notice _____

Our new fiscal year begins on May 1st, 2003 — As our current fiscal year comes to a close, now is the time to make sure your annual dues are up to date.

Please check the date above the name on your address label. If the date does not read — **EXP 4/30/2004** your dues need to be renewed for the upcoming year. *Please note that we Do Not send out any bills for membership dues.*

▶▶ **EXP 04/30/2004** ◀◀
Mr Marcus M Towle
9876 Sohl Avenue
Hammond IN 46320- 5678

The current dues schedule is as follows:

\$10.00 Individual or Couple — \$25.00 Corporate or Business

Those members who's dues are not current risk the chance of having their name removed from our mailing list as we update our files over the summertime.

Please photocopy or clip out this form below and send in with your payment today

Dues Form

Hammond Historical Society
Please Enroll or Renew My Membership
Amount Enclosed \$ _____

NAME _____
ADDRESS _____
CITY _____
STATE _____ ZIP+4 _____

Please send check or money order **DO NOT SEND CASH!**
Make your payment payable to the **Hammond Historical Society**
and mail to:

Ruth Swanson
7234 Alexander Avenue
Hammond, IN 46323-2111



HAMMOND HISTORICAL SOCIETY
564 STATE STREET HAMMOND, IN 46320-1532

Nonprofit Organization
U. S. Postage
PAID
Hammond, Indiana
Permit No. 1843

>>> NOTE NO REGULAR MEETING
TO BE HELD THIS MONTH <<<
See You In The Fall!

ADDRESS SERVICE REQUESTED

Vintage View Robertsdale

Waiting for a streetcar named desire. Those were the days. In most instances this was the only mode of transportation for most citizens. The streetcar was the mass transit system of the era.

This view here looks north down Indianapolis Boulevard at Roberts Street.

The Robertsdale community sprung up around the Standard Oil refinery in Whiting at the turn of the century and filled the need for housing.



Robertsdale was a small town complete with many homes and commercial businesses. The area was quickly annexed by the young and growing city of Hammond so it could gain access to the much needed water of Lake Michigan to its north.

Today Robertsdale and its sister settlement of neighboring Roby are both a vital and intricate part of the city of Hammond, contributing to its economic base with its many industries as well as the quality of life with its many recreation assets.